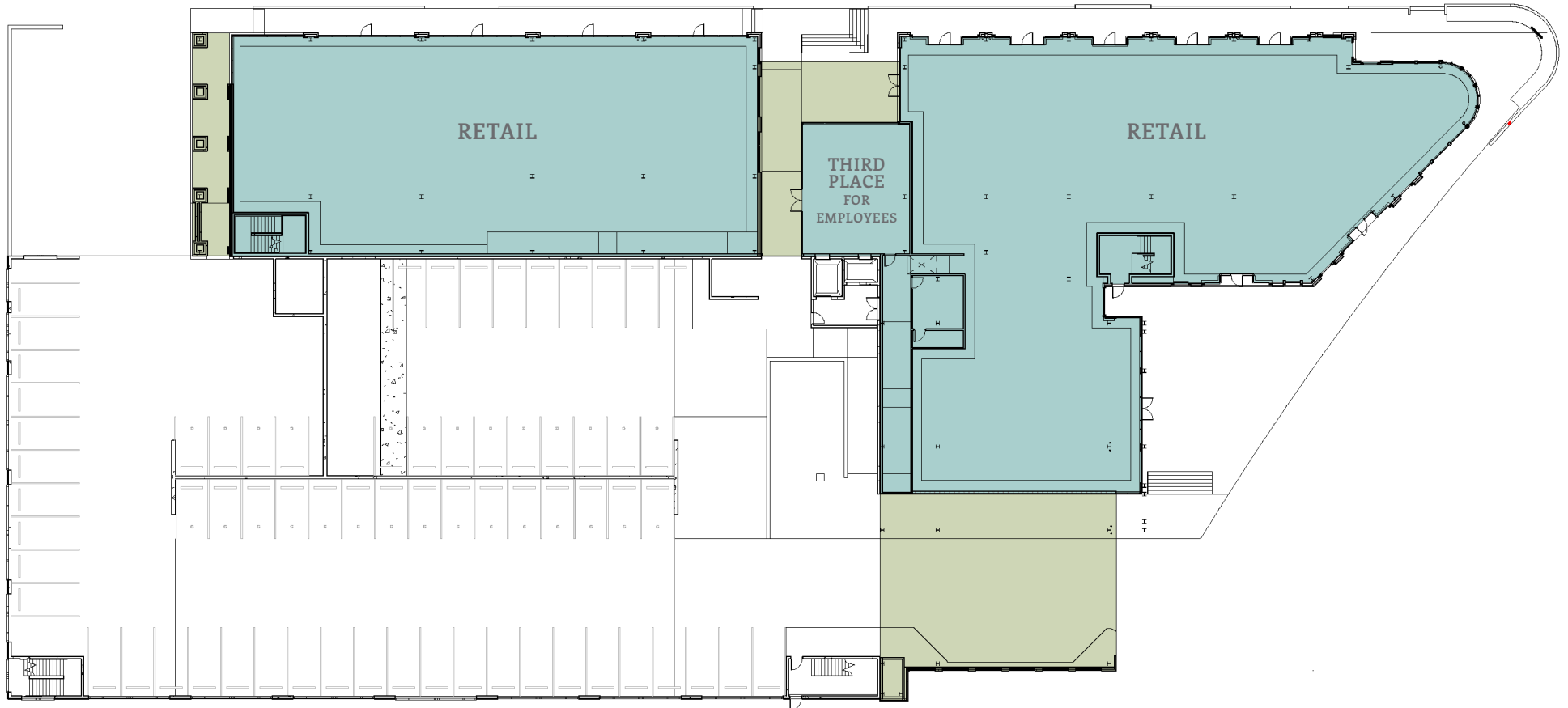


# FIRST FLOOR

GROUND-FLOOR RETAIL + OFFICE LOBBY | +/-22,000 SF



## FEATURES

- Direct garage access & pedestrian paseo to East 7th Street
- First-floor tenant lounge and third place for office tenants and community
- Three patios areas totaling +/- 2,900 SF
- Landscaped patio for outdoor dining

## RETAIL & RESTAURANTS

- Convenient parking for retail
- Pedestrian-friendly storefronts
- Native plantings to enhance pedestrian experience